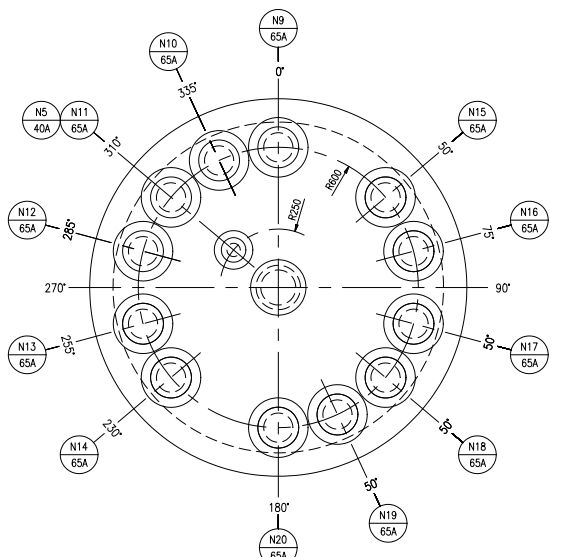
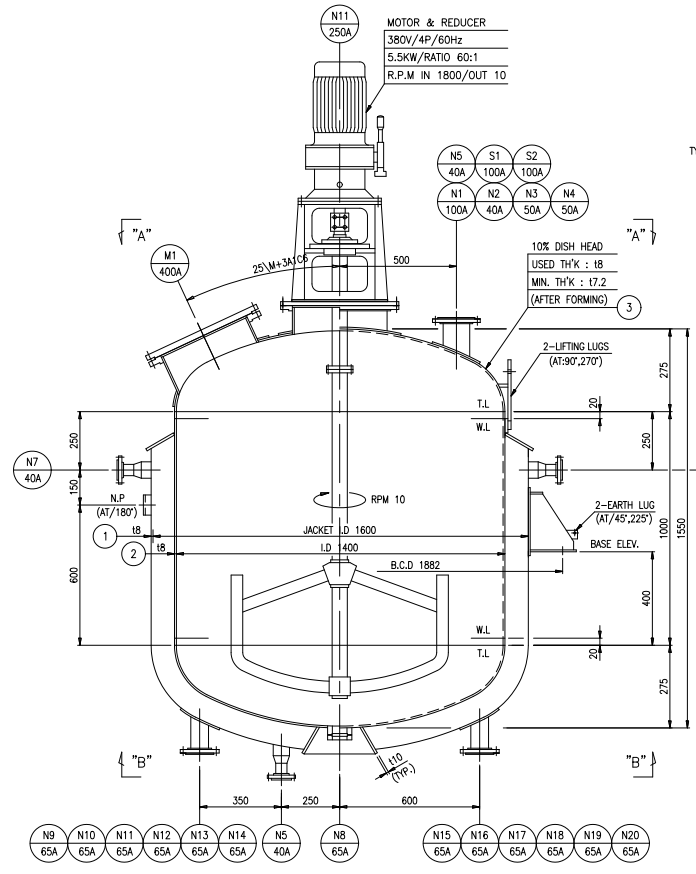


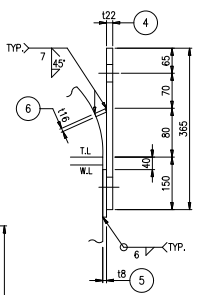
NOZZLE ORIENTATION
(SECTION "A"-A')



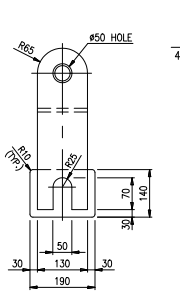
NOZZLE ORIENTATION
(SECTION "B"-B')



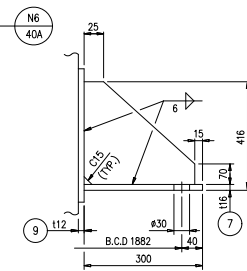
ELEVATION



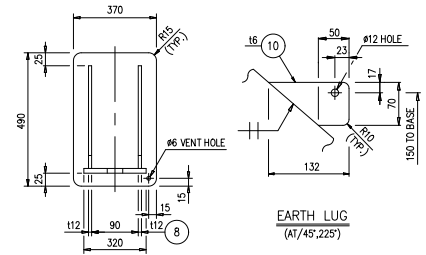
LIFTING LUG
(AT/90°, 270°)



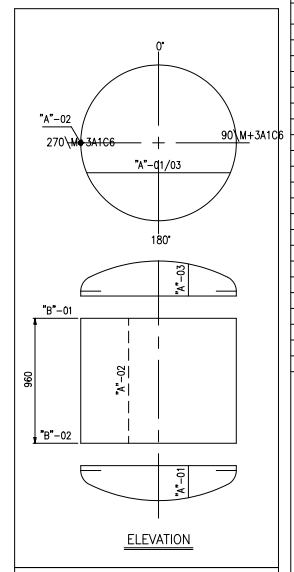
NAME PLATE BRACKET (11)
(AT/180°)



LIFTING LUG
(AT/45°, 135°, 225°, 315°)

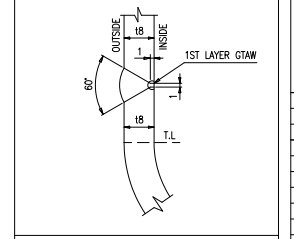


EARTH LUG
(AT/45°, 225°)

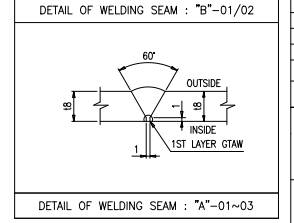


ELEVATION

WELDING SEAM PLAN



DETAIL OF WELDING SEAM : "B"-01/02



DETAIL OF WELDING SEAM : "A"-01~03

DESIGN DATA			
CODE	ASME SECT. VIII DIV. 1	TYPE	VER.
NO. OF REQ'D	ONE(1)	TYPE OF HEAD	-
KIND OF FLUID	-	REGULATION	-
PRESS. (KG/CM ²)	DESIGN ATM	CODE STAMP	NO
OPERATING ATM	EMPTY		
TEMP. (°C)	-	WEIGHT (KG)	-
OPERATING -	ERECTOR		
HYDRO. TEST PRESS. (KG/CM ²)	F.W	FULL OF WATER	-
PNEUM. TEST PRESS. (KG/CM ²)	-	CAPACITY (M ³)	-
M.A.W.P (KG/CM ²)	-	SPECIFIC GRAVITY	-
MIN. DESIGN METAL TEMP. (°C)	-	FIRE PROOFING (MM)	-
CORROSION ALLOWANCE (MM)	-	STRESS RELIEF.	-
POST WELD HEAT TREATMENT	NO	WIND VELOCITY (M/SEC.)	-
RADIOGRAPHY EXAM.	20%	SEISMIC ZONE	-
JOINT EFFICIENCY (%)	0.85	PAINTING	-
INSULATION (MM)	YES		

NOZZLE LIST									
MARK	NO. REQ'D	SIZE	SCH.	RATING	TYPE	FACING	SERVICE	PROJECTION TO CL.	REMARK
N1	1	100A	40	JIS 10K	S.O	R.F	SPARE	-	-
N2	1	40A	80	JIS 10K	S.O	R.F	-	-	-
N3	1	50A	40	JIS 10K	S.O	R.F	-	-	-
N4	1	50A	40	JIS 10K	S.O	R.F	FEED HAED	-	-
N5	1	40A	80	JIS 10K	S.O	R.F	DISCHARGE HOLE	-	-
N6	1	40A	80	JIS 10K	S.O	R.F	OIL IMPORT	-	-
N7	1	40A	80	JIS 10K	S.O	R.F	OIL OUTLET	-	-
N8	1	40A	80	JIS 10K	S.O	R.F	WASTE MATERIAL MOUTH	-	-
N9	1	40A	80	JIS 10K	S.O	R.F	PART EXPORINATION	-	-
N10	1	40A	80	JIS 10K	S.O	R.F	PART EXPORINATION	-	-
N11	1	250A	40	JIS 10K	S.O	R.F	PART EXPORINATION	-	-
N12	1	40A	80	JIS 10K	S.O	R.F	PART EXPORINATION	-	-
N13	1	40A	80	JIS 10K	S.O	R.F	PART EXPORINATION	-	-
N14	1	40A	80	JIS 10K	S.O	R.F	PART EXPORINATION	-	-
N15	1	40A	80	JIS 10K	S.O	R.F	PART EXPORINATION	-	-
N16	1	40A	80	JIS 10K	S.O	R.F	PART EXPORINATION	-	-
N17	1	40A	80	JIS 10K	S.O	R.F	PART EXPORINATION	-	-
N18	1	40A	80	JIS 10K	S.O	R.F	PART EXPORINATION	-	-
N19	1	40A	80	JIS 10K	S.O	R.F	PART EXPORINATION	-	-
N20	1	40A	80	JIS 10K	S.O	R.F	PART EXPORINATION	-	-
M1	1	400A	-	-	-	-	MANHOLE	-	-
S1/2	1	100A	40	JIS 10K	S.O	R.F	MOUTH	-	-

GENERAL NOTES			
1.	ALL DIMENSIONS ARE IN MM UNLESS OTHERWISE NOTED.		
2.	ALL BOLT HOLES SHALL STRADDLE NORTH & SOUTH CENTER LINE OR NATURAL HORIZ. & VERT. CENTER LINE OF EQUIPMENT UNLESS OTHERWISE NOTED.		
3.	NOZZLE PROJECTION ARE FROM CENTER LINE OF KESSEL, OR HIGHEST TANGENT LINE TO GASKET FACE OF FLANGE.		
4.	ALL EXTERNAL FLANGE GASKET CONTACT SURFACE SHALL BE FINISHED WITH 125-250 AHRH (MICRO-INCH)		
5.	TO BE PERFORMED INSIDE ACID CLEANING WORK.		

NO.	DESCRIPTION	MATERIAL	Q'TY	SIZE	REMARK
12	SET SCREW	SS400	4	M4x8L	
11	NAME PLATE BRACKET	SUS304	1	14	
10	EARTH LUG	SUS304	2	16	
9	REIN-FPAD	SUS304	4	112	
8	SUPPORT PLATE	SS400	4	112	
7	BASE PLATE	SS400	4	116	
6	SUPPORT PLATE	SS400	2	116	
5	REIN-FPAD	SUS304	2	112	
4	LIFTING LUG	SS400	2	112	
3	HEAD	SUS304	2	18 (10% DISH)	
2	SHELL PLATE	SUS304	1	18	
1	SHELL PLATE	SUS304	1	18	

MATERIAL LIST FOR ONE SET

ZG XA BuXlanMu trading co.,Ltd

CONTRACTOR :

JOB NO.	-	TITLE	KETTLE TANK GENERAL ASSEMBLY
APPROVED BY			
REVIEWED BY			
DRAWING	KEM		
SCALE	1 / 15	DWG. NO.	VP-KE-01
REV.			

REV.	DATE	DESCRIPTION	DRAWN	CHK'D	APP'D
	2005.12.28	FOR APPROVAL	KEM		

DWG NO.	TITLE	REFERENCE DWG.
VP-KE-03	NOZZLE DETAIL	
VP-KE-02	MANHOLE DETAIL	
DWG NO.	TITLE	